



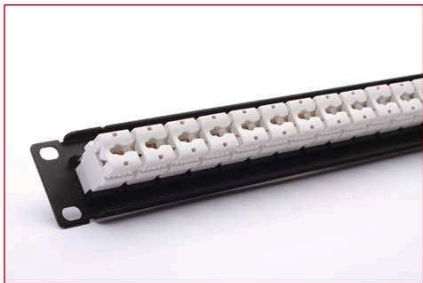
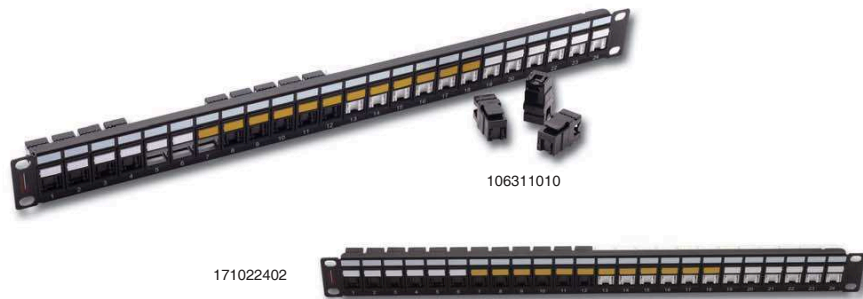
CATEGORY 6 CABLING SOLUTIONS

*premium
line*

www.premiumline-cabling.com

Modular Patch Panel High Density Unloaded Patch Panel

Premium Line unshielded compact unloaded patch panel is in dedicated design to adopt Premium Line 180° Unshielded keystone jack or 90° slim keystone jack, to meet different place use intentions. Each ports has sequence numbering, plastic labeling remark and above mark able position, is right to for future port identification or re-management. Main body made by single complete steel plate, finished in 1U 19" size, suits for all standard 19" rack installation.



All the products are verified the electrical characteristics required in the directive.

High Density Unloaded Patch Panel

PART NO.	DESCRIPTION	PACKING SIZE
171022402	Premium Line 24port High Density Unloaded Patch Panel for Unshielded Keystone Jacks, Black	53.8x35.2x27 cm
195030002	Premium Line Cable Management Bar, Screw Type, Black	50.5x27.9x27 cm

Patch Panel

Category 6 1U Shielded Patch Panel

Premium Line Category 6 shielded Patch panel comply with ANSI/TIA-568-C.2, ISO/IEC 11801 and EN 50173-1 Class E specifications. The complete module complies with EU ROHS directive.

The construction is in standard 1U 19" size, suits for all 19" rack installation. The main metal frame and rear back cover made by SECC material, with the thickness over 1.0mm. Dual type IDC accepts 22-26 AWG solid cable, easy for termination with 110 or Krone tools. The finished product available in black or light gray RAL7035 color.

Physical Characteristics

Jack	Phosphor bronze, 50μ inch gold plating over nickel in contact area
IDC	100μ inch nickel plated over phosphor bronze
Shielded Cover	50-60μ inch nickel plated over phosphor bronze

Electrical Characteristics

Dielectric Strength	1000V RMS for 1min
Current Rating	1.5Amp Max.
Insulation Resistance	10MΩ Min.
Contact Resistance	2mΩ per contact
Temperature Range	-10°C to 60°C
Humidity	10%-90%; non condensing

Applications

- 1000BASE-TX Gigabit Ethernet
- 1000BASE-T Gigabit Ethernet
- 100BASE-TX Fast Ethernet
- 10BASE-T Ethernet
- Voice, Video and other applications



176212412

All the products are verified the electrical characteristics required in the directive.

Category 6 1U Shielded Patch Panel

PART NO.	DESCRIPTION	PACKING SIZE
176212412	Premium Line Category 6 24port Shielded Patch Panel, Dual Type IDC, Black	50.5x27.9x27 cm
176212419	Premium Line Category 6 24port Shielded Patch Panel, Dual Type IDC, RAL7035	50.5x27.9x27 cm